

imagePRESS
C850 C750 C650

Canon
Delighting You Always

THE FUTURE



**NEW LEVELS OF QUALITY AND
PRODUCTION IN COLOUR PRODUCTION**

BRING IT ON

Business *can* be simple

COLOUR WITHOUT COMPROMISE

IT'S YOURS

Colour consistency means compromising on productivity, right? Not anymore. The latest imagePRESS features Auto Correct Colour Tone (ACCT) for multidimensional mixed colour calibration.

This allows colour adjustments to be made on a wider range – keeping the colour consistency, accuracy and quality all at the highest possible level.

What's more, AGA (Auto Gradation Adjustment – the C850/750/C650's easy-to-use colour calibration tool) reduces your calibration times, assuring perfect colour correction for even-more-guaranteed consistency on images and text.

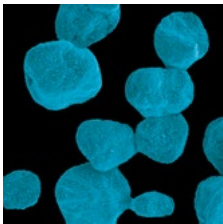
HIGH QUALITY FOR ALL PRINTS

CONSISTENTLY VIVID (CV) TONER FOR COLOUR

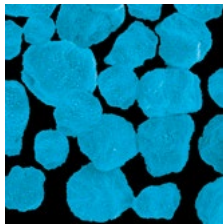
CONSISTENCY CV toner is Canon's newly developed toner, which delivers higher quality print combined with high speeds of up to 85 ppm. The new para-shell structure, ultra-fine toner particles and the toner's smooth surface, it's improved toner transfer efficiency for enhanced colour consistency and accuracy across a wide variety of media, including embossed and rough paper surfaces for custom and premium applications.

The efficient toner transfer reduces toner wastage, energy consumption and paper deformation. CV toner features a broad colour spectrum for rich and vivid colours that will produce high quality marketing materials and the right colour on all your corporate documents. It has a gloss optimisation technology allowing a high gloss finish on coated media and a matt finish on plain/low gloss media.

The enhanced developer unit is designed to cool the internal temperature and maintain high quality image in heavy duty environments. All these new features mean delighted customers willing to grow their business together with yours.



V Toner

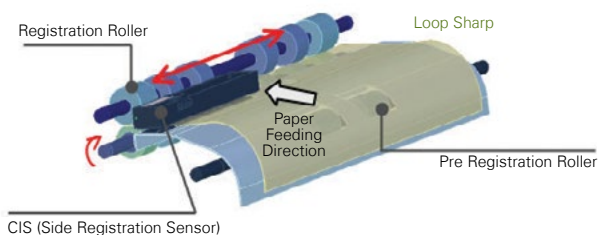


New CV Toner

COMPACT REGISTRATION TECHNOLOGY (CRT)

Compact and highly accurate registration technology assures best-in-class results whether printing 1 sheet or thousands. The CRT combines digital sensors together with registration rollers to ensure that every single sheet is correctly positioned during print runs and that the image is placed in the same location on every sheet, for the highest quality results every time. This new technology also provides full control of the registration process, allowing you to satisfy the needs of even your most demanding customers.

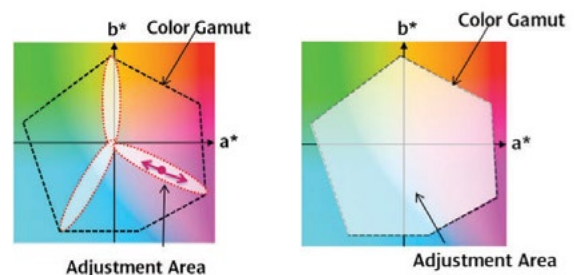
COMPACT & HIGH ACCURATE REGISTRATION MODULE



Skew and side registration correction mechanism

ENHANCED COLOUR CALIBRATION Auto Correct Color Tone (ACCT) is the technology to get mixed colour back to initial condition based on values that are registered in the first ACCT at installation executed by service technician. For the first time in a Canon light production device, multidimensional mixed colour calibration (rather than CMYK single colour calibration). As the previous Auto Gradation Adjustment (AGA) focuses correcting single colours.

Auto Correct Color Tone can cover other colours that are not corrected by Auto Gradation Adjustment. A Special chart to be measured by reader is prepared for ACCT. This allows to make colour adjustment with a wider colour gamut that printer can reproduce.



Auto Gradation Adjustment (AGA)

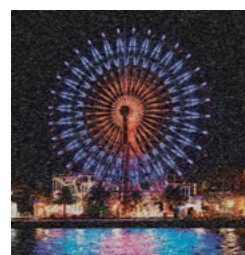
Auto Correct Color Tone (ACCT)

VIBRANT IMAGES The imagePRESS C850 series feature a 32 beam Vertical Cavity Surface Emitting (VCSEL) laser unit with multi-exposure technology that achieves an exceptional 2,400 x 2,400 dpi resolution – enabling even higher precision in the printing of text and images, while supporting high productivity. Image distortion compensation improves digital scale up and down so operators can easily adjust and correct images, including fan correction.

This new technology also allows operators to choose from a selection of the most versatile screen patterns available. They can select either new dot-screen patterns for optimised quality closer to offset or line-based patterns for even a larger choice.

These screen patterns can optimise the quality of any print application and, as a result, deliver the most stunning images that your customers will love and pay a premium for high-value applications.

BETTER HANDLING OF TEXTURE MEDIAS



Other brand printer



imagePress C850/C750/C650

MAXIMUM PRODUCTIVITY

IMPRESSIVE PRODUCTION SPEEDS

The Advanced Twin Belt Fusing unit is high production speeds of up to 80 ppm are possible on a wide range of media. The imagePRESS C850/C750/C650 is capable of running at maximum speed on heavy stock up to 220gsm and on uncoated stocks it offers exceptional production speeds. It achieves this outstanding productivity thanks to the innovative Induction heating technologies that heat up the fusing belt quickly and efficiently and the improved belt cooling system. The imagePRESS doesn't sacrifice quality for productivity and these impressive speeds will increase the productivity of your print room and allow you to meet your customer's demand, increase customer loyalty and grow your business.

AUTO DUPLEX SUPPORT

Duplex printing is in high-demand amongst print professionals as this opens up revenue opportunities, especially for heavyweight stocks. With a compact and efficient path design, the imagePRESS C850/C750/C650 lets you quickly and effortlessly produce duplex print jobs on heavy weight media up to 300 gsm, with highly accurate front to back registration. Thanks to this technology, the imagePRESS C850/C750/C650 delivers a better performance and gives you the opportunity to handle more demanding jobs without manual intervention and impact on your print room productivity.

VERSATILE MEDIA HANDLING

WIDE RANGE OF APPLICATIONS

The most outstanding and eye-catching applications depend on the creativity and the material used for the job, which includes a mix of different substrate. The imagePRESS C850/C750/C650 has been designed to provide you with outstanding performance and impressive media handling. The Elastic Intermediate Transfer Belt – which increases toner transfer efficiency, including on textured or recycled paper – the imagePRESS C850/C750/C650 can handle heavyweight stocks and produce extensive applications ranging from leaflets to the highest-quality brochures and other marketing communications that will give you and your customer the return on investment desired.

ADVANCED FEEDING TECHNOLOGY

The imagePRESS C850/C750/C650 features a new multi-drawer paper deck with enhanced air separation technology and optimum roller pressure, which handles a wide variety of media and prevents multi feeds even of coated stock. This new piece of technology can blow air at different speeds based on the type of paper and weight, virtually eliminating paper jams and significantly increasing your print room's efficiency and productivity.



THE PERFECT CHOICE FOR EVERY PRINT ENVIRONMENT

The innovative imagePRESS C850/C750/C650 has been designed to meet all the challenges of the colour production market. Ideal for busy CRD and GA environments, the imagePRESS C850/C750/C650 combines exceptional image quality with powerful productivity and offers the versatility to create extensive and innovative applications across a wide range of media, including heavyweight coated stocks and envelopes.

It can flexibly handle everything from short runs to complex variable data printing for personalised print communications – all within a small but scalable footprint. And with extended finishing capabilities and fast turnarounds it's the perfect choice to help you meet every print challenge. Plus it offers an excellent return on investment – bringing time and cost savings to demanding CRDs and revenue generating opportunities to Graphic Arts environments.



HEAVY MEDIA


Different customers want different things.

And with the imagePRESS C850/C750/C650, you can make sure they get what they want – right across a wide range of applications and substrates.

The imagePRESS C850/C750/C650's Elastic Image Transfer Belt (an additional elastic layer on top of the base belt material) delivers the best results in its class – even with challenging media such as heavy-structured media.

So whether you're printing leaflets or standard-sized envelopes, high-quality brochures or long sheet, 762mm auto-duplex banners – the imagePRESS C850/C750/C650 is up to the job.

LIGHT WORK



762mm auto-duplex banners

SEE THE DIFFERENCE TAKE A LOOK

HIGHLIGHTS OF THE imagePRESS C850/750/650

In-line and 3rd party
finishing for dynamic
and impressive applications

Wide range
including
and envelope
and project

11

10

the
imagePRESS C850 | C750 | C650

is up to the job

REFERENCE

ge of applications,
duplex banner a
opes for new ideas
cts



12

Scalable small
footprint that suits
any environment

7

Choice of innovative
workflows that suits
all ways of working,
including the new
PRISMAsync



- 1 Consistently Vivid (CV) toner for vividly crisp images
- 2 R-VCSEL technology provides clear, crisp 2,400 x 2,400 dpi output at high speeds
- 3 190 lpi dot-screen pattern for offset-like prints
- 4 Compact Registration Technology (CRT) – one of the best one in its class
- 5 Advanced Twin Belt Fusing unit for the highest productivity, including mixed-media up to 85ppm
- 6 Enhanced colour calibration & Multi D.A.T. II for consistency and accuracy, from the first to the last print, even on long runs
- 8 Elastic Image Transfer Belt for versatile media handling, including heavy-structured media
- 9 Exceptional uptime to achieve maximum print room performance

SERVER SPECIFICATIONS

	imagePRESS Printer Kit	imagePRESS Server F200 (Embedded Fiery Based Server)	imagePRESS Server G100 (Embedded Fiery Based Server)	PRISMAsync iPR C850 Series A-1
Page Description Languages	PCL5/6 UFR II	PCL5/6 (Driver & utility support :Only for embedded/ PCL interpreter is available on external Fiery server)		PDF 1.7, Prisma Sync (transactional), PCL/PJL (transactional)
Adobe PostScript	Level 3	Level 3		Level 3
Resolution	1,200 dpi x 1,200 dpi, 600 dpi x 600 dpi	1,200 dpi x 1,200 dpi, 600 dpi x 600 dpi		PS/PDF: 600 x 600 dpi or 1,200 x 1,200 dpi, transactional PCL: 600 x 600 dpi, transactional IPDS: 600 x 600 dpi
Memory	2 GB	2 x 2 GB	1 x 2 GB	4x 4GB DDR3
Hard Disk Drive	1 TB	1 x 1 TB	1 x 500 GB	3 x 3.5" SATA II, 250 GB, 7200 RPM
Processor Speed		Up to 3.1 GHz (Intel Core i5 2400)	2.9 GHz (Intel Pentium G850)	Intel® Core™ i7, 2.8 GHz
Fonts	136 Adobe PS fonts, 113 PCL fonts, 32 barcode	138 Adobe PS fonts, 113 PCL fonts, 32 barcode		136 Type1 fonts for roman languages User import of PS fonts via Settings Editor Optional Adobe Asian fonts: Japanese: 5 fonts Chinese: 2 fonts for simplified Chinese, 1 font for traditional Chinese Korean: 1 font for Korean
Supported Operating Systems	Windows XP, Server 2003, Server 2008, Server 2008R2, Server 2012, Vista, 7, 8, 8.1, MacOS 10.5, 10.6, 10.7, 10.8, 10.9	Windows XP, Server 2003, Server 2008, Server 2008R2, Server 2012, Vista, 7, 8, 8.1, MacOS 10.5, 10.6, 10.7, 10.8, 10.9		Supported operating systems (printer drivers): Windows Vista (32/64 bit), 7 (32/64 bit), Server 2003 (32/64 bit), Server 2008 (32/64 bit), Server 2008R2 (64 bit), Server 2012R2, 8 (32/64 bit) MacOS 10.6 (32/64 bit), MacOS 10.7 (32/64 bit), MacOS 10.8 (64 bit), MacOS 10.9 (64 bit)
Interface	Ethernet 1000 Base-T/ 100Base-TX/10Base-T, USB	Ethernet 1000 Base-T/100Base-TX/10Base-T, USB, DVI connector (only for F200), DSUB 15pin connector (Only for G100)		Ethernet (10/100/1000 Base-T), USB for files via operator panel, DVI for connection of operator panel
Network Protocol	TCP/IP, AppleTalk (only support font downloader), Bonjour, SNMP, IPP, FTP, SMB, IPv6, WSD	TCP/IP, AppleTalk (only support font downloader), Bonjour, SNMP, IPP, FTP, SMB, IPv6, WSD (minimum support to achieve WHQL certification)		TCP/IP, including static/auto IP (DHCP) SNMP v1/v2c/v3, Host resources MIB, System group MIB II, Printer MIB, Job Monitor MIB submission via lpr, hotfolders, socket, SMB, IPP, JDF/JMF (via adapter)
EFI accessories (Optional)		SeeSequence Suite/Impose/Compose,		
		GA Package Premium Edition Removable HDD Kit	Productivity Package	



MAIN UNIT - GENERAL SPECIFICATIONS		
Technology	Colour Laser Beam Printing	
Resolution	Up to 2400dpi x 2400dpi	
Colour Gradations	256 per colour	
Registration Tolerance	Front to Back: 1.0mm or less	
Print Speed	C850- up to 85pp/min C750- up to 75pp/min C650- up to 65pp/min	
Paper Size	13" x 19.2", SRA3, 12" x 18", 11" x 17", LGL, LTR, LTRR, EXEC, Irregular Size (182mm x 182mm to 330.2mm x 487.7mm)	
Paper Weight	52 to 300g/m ²	
Paper Capacity	Standard	3 x 550-sheet cassettes (52-220 g/m ²) 100-sheet multi-purpose tray (80 g/m ²) 1 x 3500 sheets side paper deck (A4/A3/SRA3) 1 x 6,000 sheets (3 x 2,000 sheets - A4/A3/SRA3)
	Option	
	POD Deck Lite-C1	
	Multi-drawer Paper Deck C1	
Max Paper Input Capacity	7,650 sheets (A4/A3)	
Max Paper Output Capacity	11,200 sheets (A4/A3)	
Supported Media Types	Cassettes	Thin paper, Plain paper, Recycled paper, Colour paper, Heavy paper, Pre-punched paper, Bond, Letterhead, Tab paper* Transparency, Envelopes**
	Multi-purpose tray	Thin paper, Plain paper, Recycled paper, Colour paper, Heavy paper, Coated paper, Pre-punched paper, Tab paper, Bond, Transparency, Label, Envelopes, Letterhead
	Optional Paper Deck	Thin paper, Plain paper, Recycled paper, Colour paper, Heavy paper, Pre-punched paper, Coated paper, Textured, Bond, Transparency, Label, Letterhead, Tab paper***, Envelopes
Supported media sizes	Paper cassette 1, 2 & 3	
	Standard size	A4, A4R, A5R, A3, SRA3, 13"x19" (330 x 483 mm)
	Free size	100 mm x 148 mm to 330.2 mm x 487.7 mm
	Multi-purpose tray	
	Standard size	A4, A4R, A5R, A3, SRA3, 13"x19" (330 x 483 mm)
	Free size	100 x 148 mm to 330.2 x 487.7 mm
	Envelopes	No.10 (COM10), Monarch, ISO-C5, DL
Supported media weights	Cassettes	52 to 220 g/m ²
	Multi-purpose tray/	
	Optional Paper deck	
	Duplex	52 to 300 g/m ² 52 to 300 g/m ²
Warm Up Time	Approximately 360 seconds	
Interface type	USB 2.0 Hi-speed	
	Ethernet	1000 BaseT/100Base-TX/10Base-T
	Standard	2 x USB Host
Network protocols	TCP/IP* (LPD/Port 9100/WSD/IPP/PPS/SMB/ FTP), IPX/SPX (NDS, Bindery), AppleTalk	
Processor speed	1.66 GHz (SOC ARM 1136JF-S 400 MHz ARM 946 200 MHz)	
Memory	1.5GB (SOC 2GB)	
Hard Disk Drive Standard	1TB Hard Disk Drive	
Control panel	EFI/Canon PS/PCL	Upright Control Panel G1: 26.4 cm (10.4 inch) TFT SVGA LED Backlight Colour Uplight Touchscreen
	PRISMAsync	Operating Panel-A4: 15 inch touch panel screen
Dimension	(W x D x H)	1,952mm* x 934 mm x 1,424 mm**
Min Installation space	1,952mm (W) x 1,624mm (D)	
Weight	Approx 316kg *includes ADF	
Operating environment	Temperature- 20 to 27°C (50 to 86°F) Humidity- 15 to 60 % RH (no condensation)	
Power Source	220-240 V (±10 %), 50/60 Hz (±2 Hz), 13AMP x 2	
Power Supply Consumption	Max	Approx 1,560W (at power supply) or less + 2,500W (at fusing unit) or less
	Standby	Approx. 1.0Wh or less
	Sleep mode	Approx. 1.5Wh or less
Typical Electricity Consumption rating (TEC)	9.9kwh in imagePRESS C850/C750 85ppm/75ppm 8.9kwh in imagePRESS C650 65ppm	
Noise Levels Sound Pressure	Active	75dB or less
	Standby	56dB or less

* Requires Tab feeding attachment
** Requires Envelope feeding attachment
*** Requires Multi Drawer Paper Deck C1

* IPv4/IPv6 support
** Includes Operator Panel and Output tray option
*** Includes Operator Panel Height to ADF is 1,222.2mm

FINISHER W1 / BOOKLET FINISHER W1 [PRO SERIES]

Tray Capacity	Upper Tray	1,000 sheets
	Lower Tray	4,000 sheets
	Saddle Stitch Tray	30 Booklets or Limitless
	Staple Positions	Corner, Double
	Paper Weight	52 to 300 gsm [Cover]
Paper Size	Stapling	Executive, Letter-R, Letter, Legal, 11" x 17"
	Saddle Finisher	Letter-R, Legal, 11" x 17", 12" x 18", 13" x 19", Custom Size
	Staple Capacity	Up to 100 Sheets
	Booklet Stapling Capacity	Uncoated: Up to 25 Sheets Coated: Up to 15 Sheets V Folding: Up to 5 Sheets without Stitch
Dimensions	(W x D x H)	W1 & W2: 800 mm x 792 mm x 1,239 mm
Weight		W1 - Approx. 130 kg W2 - Approx. 180kg

FINISHER - T1/SADDLE FINISHER - T1 [Light series for iPRC700 & C600 only]

Tray Capacity	Upper Tray	1,000 sheets
	Lower Tray	2,000 sheets
	Saddle Stitch Tray	30 Booklets or Limitless
	Staple Positions	Corner, Double
	Paper Weight	52 to 300 gsm [Cover]
Paper Size	Saddle Finisher	Letter-R, Legal, 11" x 17", 12" x 18", 13" x 19", Custom Size
	Staple Finisher	Executive, Letter-R, Letter, Legal, 11" x 17"
	Staple Capacity	Up to 100 Sheets
	Booklet Stapling Capacity	Uncoated: Up to 25 Sheets Coated: Up to 15 Sheets V Folding: Up to 5 Sheets without Stitch
Dimensions	(W x D x H)	800 mm x 792 mm x 1,239 mm
Weight		Approx. 130 kg / Approx. 180kg

BOOKLET TRIMMER F1 Requires Booklet Finisher

Trim Width	2-20mm
Trim Thickness	Up to 50 sheets (includes Cover)
Acceptable Paper Weight	52 to 300g/m ²
Dimensions	(W x D x H)
Weight	1,575mm x 770mm x 1,040mm Approx 152 kg

TWO-KNIFE BOOLET TRIMMER A1 Requires Booklet Trimmer

Trim Width	2-15 mm
Trim Thickness	Up to 50 sheets (includes Cover)
Acceptable Paper Weight	52 to 300g/m ²
Dimensions	(W x D x H)
Weight	536 mm x 770 mm x 1,040 mm Approx 145 kg

DUPLEX COLOR IMAGE READER-K1

Image Sensor	CCD
Document Size	Statement to 11" x 17"
Resolution	600 x 600 dpi, 256 Gradations
Scan Speed	300 dpi 600 dpi
	200 120
	BW (duplex) Color (duplex)
	140 70

PUNCH UNIT BT1/BU1 Requires Booklet Finisher W1 or Finisher W1

Punch Hole type	BT1 BU1	2 holes and 4 holes (FRN) selectable, 4 holes (Swe)
Acceptable Punch Paper Weight		52-300 g/m ²
Acceptable Punch Paper Size	2 holes 4 holes	A3, A4, A4R, Free size (182 x 182 to 297 x 432.0 mm) A3, A4, Custom size, Free size (257 x 182 to 297 x 432 mm)
Weight		Approx 7.7 kg

DOCUMENT INSERTION UNIT N1

Number of trays	2 trays
Paper size	A3, A4, A4R, SRA3, 13"x19", Free size (182 x 182 mm to 330.2 x 487.7 mm)
Paper Weight	52 to 300 g/m ²
Paper Capacity	200 sheets x 2 trays (80 g/m ²)
Dimensions	(W x D x H)
Weight	336 mm (746mm including Tray) x 793 mm x 1407 mm 61 kg

HIGH CAPACITY STACKER H1

Paper Size	A3, A4, A4R, A5R, SRA3, 13"x19", Free size (140 x 182 mm to 330.2 x 487.7 mm)
Paper Weight	52 to 300 g/m ²
Output Capacity	Stack tray Top Tray
	(W x D x H)
Dimensions	6,000 sheets (80 gsm) in two stacks of 3,000 sheets each
Weight	200 sheets 899 mm x 792 mm x 1,040 mm Approx. 120 kg

PAPER FOLDING UNIT J1

Z-Fold	Paper size	Paper weight
C-Fold	A3, A4R	52 to 105 g/m ²
Accordion Z-fold	A4R	52 to 105 g/m ²
Double parallel	A4R	52 to 105 g/m ²
Half fold	A4R	52 to 90 g/m ²
Output Capacity		52 to 105 g/m ²
		C-Fold and Accordion Z-fold: 40 sheets, Double parallel: 25 sheets
Dimensions	(W x D x H)	336 mm x 793 mm x 1190 mm
Weight		Approx. 71 kg

PERFECT BINDER E1

Booklet size	Width Length	203 to 297 mm 138 to 216 mm
Booklet thickness		Up to 25 mm
Cutting Range	Top/bottom Foreedge	6.5 to 39.5 mm at each edge 6.5 to 49.5 mm
Body pages	Number of sheets Sizes Paper weight	10 to 200 sheets (75 g/m ²), plus Cover Width: 257 to 320 mm, Length: 182 to 228.6 mm 60 to 163 g/m ² *
Cover	Number of sheets Sizes Paper weight	(* 106 to 163 g/m ² : up to 10 sheets as inserted paper) 1 sheet Width: 257 to 330.2 mm, Length: 364.0 to 487.7 mm 91 to 300 g/m ²
Tray capacity		Approx. 127 mm or total approx. 1,000 sheets of paper as a total
Dimensions		922 x 791 x 1,300 mm
Weight		306 kg
Power		240V, 2.6A

eMAINTENANCE

Take control of your Canon device fleet and reduce administration burdens with eMaintenance. With less downtime and easy maintenance, you will have longer uptime and greater productivity.

For information on full accessories and other server specifications, kindly refer to the product information at www.canon-asia.com.



#UNLEASHPRINT



SOUTH & SOUTHEAST ASIA REGIONAL HEADQUARTERS

CANON SINGAPORE PTE. LTD.

1 Fusionopolis Place Galaxis #15-10 Singapore 138522

Tel: +65-6799 8888 | Fax: +65-6799 8882 | www.canon-asia.com | www.canon.com.sg

CANON SALES SUBSIDIARIES & BUSINESS PARTNERS

HONG KONG

Canon Hongkong Co. Ltd
19/F, The Metropolis Tower
10 Metropolis Drive,
Hung Hom, Hong Kong.
Tel : 852 3191 2388
Fax : 852 2369 3800
www.canon.com.hk

INDIA

Canon India Private Limited
7th Floor, Tower B,
Building # 5,
DLF Epitome, DLF Phase III,
Gurgaon 122002
Tel : 91-124-4160000
Fax : 91-124-4160011
www.Canon.co.in

INDONESIA

PT Samafitro
Jalan Ir. H Juanda No. 8
Jakarta 10120,
Indonesia
Tel : 61-21-2949 5500
Fax: 62-21-384 4271
www.samafitro.co.id

MALAYSIA

Canon Marketing (Malaysia) Sdn. Bhd
Block D, Peremba Square
Saujana Resort Section U2,
40150 Shah Alam
Selangor Darul Ehsan, Malaysia
Tel : 60-3-7844 6000/
7845 0055
Fax: 60-3-7844 6196/6198
www.canon.com.my

PHILIPPINES

Canon Marketing (Philippines), Inc.
7/F Commerce and Industry Plaza,
1030 Campus Avenue Corner
Park Avenue, McKinley Hill,
Fort Bonifacio Taguig City,
Metro Manila Philippines 1634
Tel : 632-884 9000/884 9090
Fax: 632-884 9035
www.canon.com.ph

THAILAND

Canon Marketing (Thailand) Co. Ltd
98 Sathorn Square Office Tower,
21st - 24th Floor,
North Sathorn Road,
Silom, Bangrak,
Bangkok 10500
Tel : 66-2-344 9999
Fax: 66-2-344 9939
www.canon.co.th