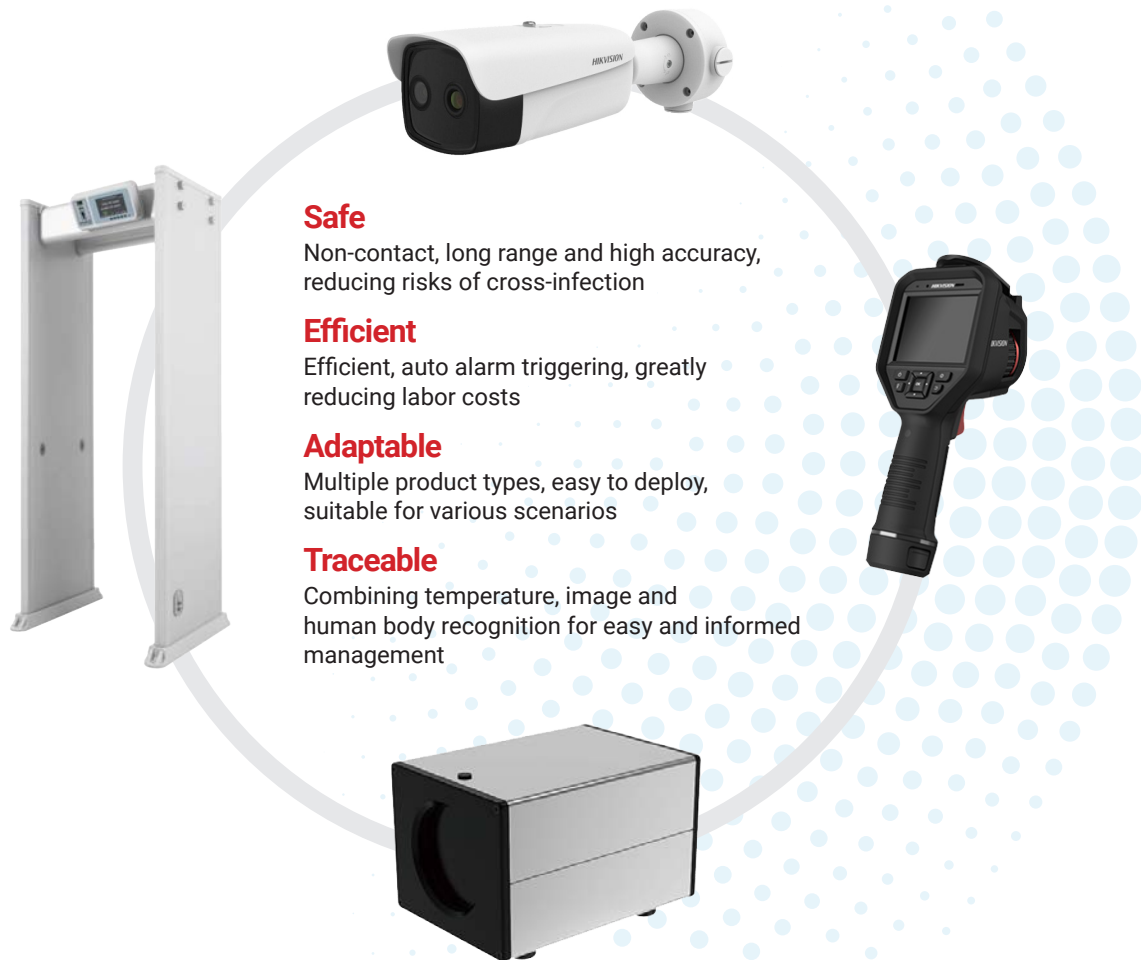


Hikvision
fever screening
solutions



Fast preliminary **fever screening** without physical contact

Thermal measurements enables people and businesses to be pro-active. Thermal technology provides early detection which can alert a requirement for separation and isolation. Thermal cameras enable fast, efficient screening of large amounts of people simultaneously. Audible and visual alert warning can be given.



Fever screening process and typical application scenarios

- 1 **Long-term** fever screening for crowds in open areas
- 2 Fever screening by **patrolling inspectors**
- 3 **Short-term** fever screening at entrances
- 4 **Long-term** fever screening with **access control**

Thermographic Body Temperature Measurement Cameras



Models

DS-2TD2637B-10/P

DS-2TD2617B-3/PA

DS-2TD2617B-6/PA

Hikvision Thermographic Bullet Body Temperature Measurement Camera is able to measure object's temperature at a high accuracy in real time. It is capable to discover and track people with higher body temperature among the crowded public area, it can be widely used in places such as customs, airports, schools and hospitals for inspection and quarantine.

It only takes one second for a thermal camera to detect the temperature of an individual. This enables fast, efficient screening of large amounts of people simultaneously. Audible and visual alert warning can be given.

Thermal cameras feature non-contact temperature measurement from more than a one meter distance. Thermal measurements enables people and businesses to be pro-active and provides early detection which can alert a requirement for separation and isolation.

Key Features

- High accuracy in real time ($\pm 0.5^{\circ}\text{C}$)
- Capable to track people with higher body temperature among the crowded public area
- Reliable temperature exception alarm function
- Strobe light and audio alarm

Application scenarios

Note: Indoor installation recommended. The fluctuation in outdoor ambient temperatures influences the accuracy of temperature measurement.



Hospital - nurse station or information desk.



Airport - passenger channels.



Public buildings - corridors.

Hikvision Black Body Temperature Calibrating system



Model

DS-2TE127-G4A

The black body is a calibration device that can set the temperature value and is a standard temperature source. The thermal device is calibrated based on the temperature of the black body. The thermal device is matched with the black body for real-time calibration (the black body is arranged opposite the thermal device to ensure that the front of the black body appears in the thermal device's screen) to ensure that the temperature measurement accuracy is precise ($\pm 0.3^{\circ}\text{C}$). The black body only needs to be powered, no internet required. Hikvision thermal cameras are available with a black body to increase accuracy.

As a standard radiation source, black body has been widely used for calibrating infrared light system, measuring material emissivity, measuring parameters of infrared sensor, and transmitting temperature between infrared emitter and thermal device.

DS-2TE127-G4A is mainly used for the calibration of thermographic device. It helps to measure the temperature in high accuracy $\pm 0.1^{\circ}\text{C}$ (0.18°F). It has a 100 VAC to 240 VAC and comes with a 2 year warranty.

Key Features

- Supports calibration of thermal device in high accuracy
- Supports different temperature settings
- High accuracy and good stability
- Easy temperature calibration and correction
- Strong ability of anti-interference

Application scenarios

Note: Indoor installation recommended. The fluctuation in outdoor ambient temperatures influences the accuracy of temperature measurement.



School - entrance of building.



Retail - entrance of supermarket.



Office building - entrance of building.

Thermographic Body Temperature Measurement Cameras



Model

DS-2TP21B-6AVF/W

The Hikvision handheld thermal camera is specially designed for body temperature measurement. It's equipped with a 160×120 resolution thermal detector. It is capable of discovering and tracking people with elevated body temperatures in crowded public areas and can be widely used in places such as customs, airport, schools, and hospitals for inspection and quarantine.

Key Features

- Accuracy up to $\pm 0.5^{\circ}\text{C}$
- Display Fusion of Thermal View and Optical View
- 3.5" LCD Touch Display
- Supports Live View on PC
- Supports Audio Intercom
- Supports Color Highlight Alarm and Audio Alarm

Application scenarios

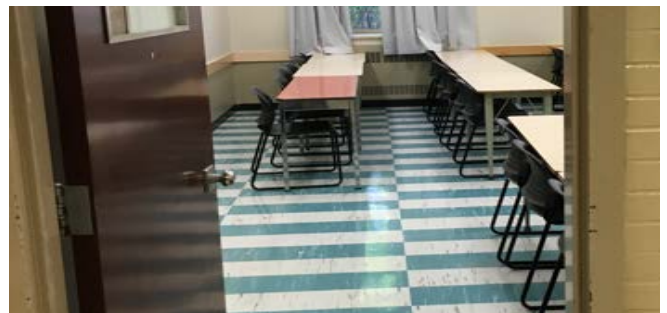
Note: Indoor installation recommended. The fluctuation in outdoor ambient temperatures influences the accuracy of temperature measurement.



Factory - workshop.



Office building - office area.



School - entrance of classroom.



Bank - entrance of branch.

Temperature Measurement Walk-Through Detector



Model

NP-SG318LT-F

ISD-SMG318LT-F walk-through metal detector, adopting the thermal imagery technology, realizes non-contact temperature measurement. Face detection function of the camera makes an accurate positioning of the measurement. The detector also supports metal detection.

It is suitable for safety inspection of dangerous goods and is widely used in public occasions and important places, etc. It is recommended to be used indoors with a windless environment.

Key Features

- Non-contact temperature measurement
- Temperature filtering: adjustable temperature threshold
- People counting
- Metal detection - Indicates the metal position on the body

Application scenarios

Note: Indoor installation recommended. The fluctuation in outdoor ambient temperatures influences the accuracy of temperature measurement.



School - entrance of library.



Commercial building - entrance of building.



Factory - entrance to factory.